

Material safety data sheet

**Pursuant to quality and testing assessment of GMI
(Gütegemeinschaft Mehrscheiben- Isolierglas / Ger-
many)**

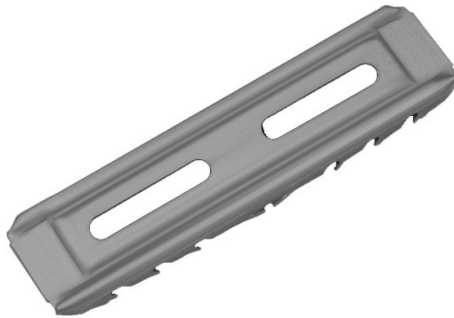
**EK STEEL Connect
straight connector**

Material safety data sheet

Pursuant to quality and testing assessment of GMI
(Gütegemeinschaft Mehrscheiben-Isolierglas)

1. Type / Trade name

**EK STEEL Connect straight connector made of cold rolled steel
(electrolytically pre-coated), desiccant passage, for connecting
post filled spacer bar profiles in insulating frame compounds**



2. Producer / Supplier

EDUARD KRONENBERG GmbH

address

EDUARD KRONENBERG GmbH
Stanz- und Kunststofftechnik
Dingshauser Straße 6-10

D 42655 Solingen

tel.: +49(0)212/222 88-0
fax: +49(0)212/222 88-999
Info@kronenberg-eduard.de

Material safety data sheet

Pursuant to quality and testing assessment of GMI
(Gütegemeinschaft Mehrscheiben-Isolierglas)

3. Material

3.1 Material composition

Cold rolled steel- DC 04 / C590
Cold rolled steel - ZE 700 LC

Measure norm: EN 10140, Gütenorm: EN 10152
Measure norm: EN 10268, Gütenorm: EN 10152

Acceptance certification according EN 10204.3.1.B / edges not refined

3.2 Surface

Zinc dull / Edition: below 2 μm to 3 μm ; top: 2 μm to 3 μm
Finishing treatment: Phosphate chromated

3.3 Stamp oil

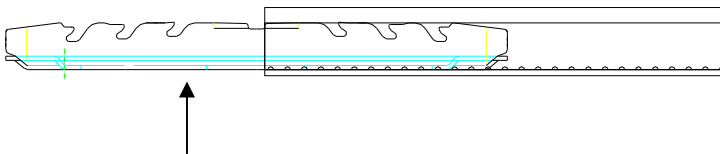
Fast flowing oil / no residues

4. Handling rules / product description

4.1 Intended purpose

Endless connection of spacer bar profiles in a frame compound of an insulating glass unit (IG) as well as for closing the frame after the bending process.

4.2 Assembly (drawing)



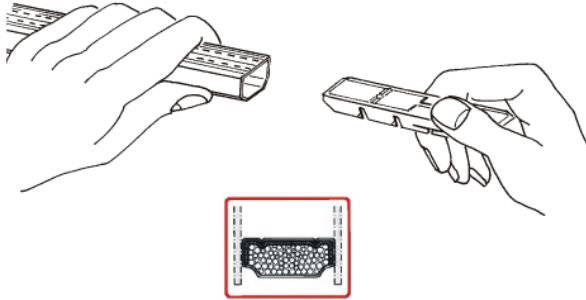
During assembling this side is turned to spacer bar perforation (innerspace of the panes).

Material safety data sheet

Pursuant to quality and testing assessment of GMI
(Gütegemeinschaft Mehrscheiben-Isolierglas)

4.3 Possible dangers / Handling

During assembling take care of the serrated edges (risk of injury). After touch and before eating meals, it is necessary to wash the hands.



Inserting EK STEEL Connect straight connectors desiccant passage into the insulating glass frame compound (take a look at product information "Easy handling")

4.4 Environmental indigestibilities

None, articles are recyclable

4.5 Storage / Logistics

Please use anti corrosion paper if receptacles are stored at high humidity and in countries with high humidity.

Remark: The aforementioned information are based on the todays state of knowledge and are no assurance of characteristics. Existing laws and regulations have to be checked and kept in mind by the recipient of our products at one's own responsibility.

Solingen, 04.09.2009